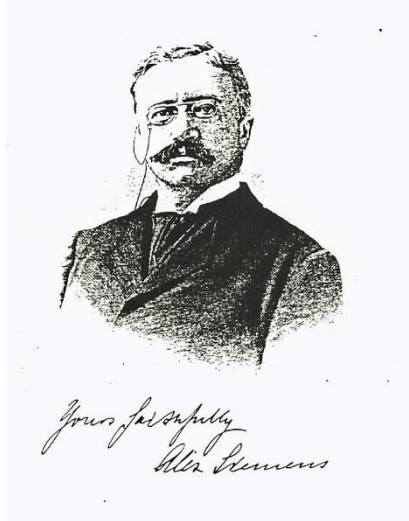


## THE BEACH HOUSE Park Lane

In 1897 Alexander Siemens purchased the land from the Newlands Estate and had Westover built by the Arts & Crafts architect Arnold Mitchell.

Siemens had married Louisa Dodwell in 1881 and she didn't like the Victorian style of décor which resulted in the wonderful stained glass windows instead of heavy drapes. The windows were designed by Oscar Patterson who was renowned for his work in the Glasgow style.



Alexander Siemens became a Director of Siemens Bros. in 1880 and Managing Director in 1889. He was a founder member of what became the Institute of Electrical Engineers and was President twice.

Following his death in 1928 Westover was bought in 1930 by William Morris, later Lord Nuffield, who was the founder of the Morris Motor Co. He tried to build a swimming pool with an engine house to pump and heat the sea water but the local storms defeated him after two efforts.

Morris and his wife were disillusioned with their lack of acceptance in Milford and sold Westover in 1931.

The next owner was Noel Trotter who was Postmaster General of the Straits Settlements and an influential figure in Milford and was a great benefactor to Milford Hospital. Following his death in 1939 the house was empty until it was requisitioned by the war office and used as officers' quarters for the whole of WWII.

In 1945 it was bought by R. F. Knowlson and in 1973 McCarthy & Stone wanted to demolish Westover and redevelop the site. Following protests from the local residents the plan was averted and the building was listed.

It became a hotel in 1977 and was renamed Westover Hall and had several owners until it was bought by Hall and Woodhouse in 2012 and renamed the Beach House.

*For further information or to contribute documents, images, or artifacts go to: [www.milfordhistory.org.uk](http://www.milfordhistory.org.uk)*

